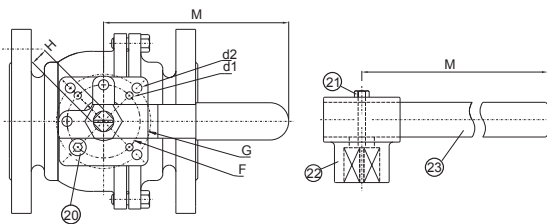
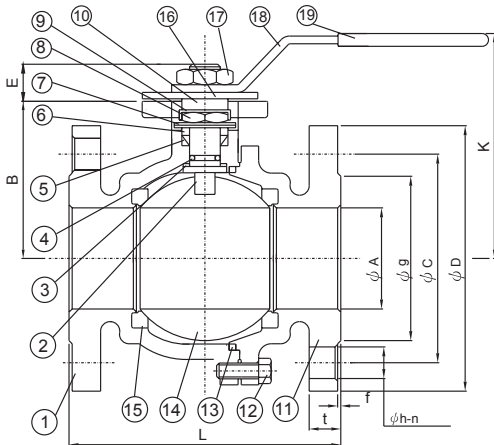


Specification

- Body & end caps quality investment casting
- Available in Stainless steel or carbon steel
- 100% air tested under water at 80-100 PSI
- Working pressure: Class150/ PN16/ JIS10K
- with ISO 5211 direct mounting pad
- Blow-out proof stem design
- Adjustable stem packing
- Temperature range : -20°F to 450°F

Break-Torque Valve for ANSI150(Nm/at 0 psi)

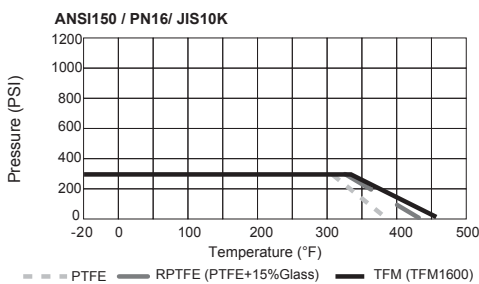
Size	1/2"	3/4"	1"	1 1/4"	1 1/2"	2"	2-1/2"	3"	4"
GREASE	5.5	7.2	8.8	13	20	24	54	62	124
NON-GREASE	7.2	9.4	13.2	18.2	30	36	95	132	245



Standard Material Specifications

No.	Part Name	Materials	No.	Part Name	Materials
1	Body	CF8M	13	Gasket	TFM1600
2	Stem	SS 316	14	Ball	SS 316
3	Thrust Washer	TFM1600	15	Ball Seat	TFM1600
4	O-Ring	VITON	16	Stopper Plate	SS 304
5	Stem Packing	TFM1600	17	Handle Nut	SS 304
6	Gland	SS 304	18	Handle	SS 304
7	Disk Washer	SS 301	19	Sleeve	PLASTISOL
8	Stem Nut	SS 304	20	Stop Pin	SS 304
9	Nut Stop	SS 304	21	Set Bolt	SS 304
10	Washer	SS 304	22	Lever Head	CF8
11	Flanged End	CF8M/ WCB	23	Pipe Handle	STEEL PIPE
12	Bolt	SS 304	Note: The greases ZIPSON use including lubricant & anti-seize greases are both SILICONE-FREE		

PRESSURE TEMPERATURE RATINGS



Dimensions (mm)

Size	A	B	E	H	K	M	F	G	d1	d2
1/2"	15	48	11	9	80	130	36	42	6	6
3/4"	20	53	11	9	80	130	36	42	6	6
1"	25	59	14	11	90	165	42	50	6	7
1-1/4"	32	71	14	11	102	165	42	50	6	7
1-1/2"	38	76	18	14	110	205	50	70	7	9.2
2"	50	85	18	14	120	205	50	70	7	9.2
2-1/2"	65	93.5	23	17	140	300	70	102	9.2	11.4
3"	80	103	23	17	150	340	70	102	9.2	11.4
4"	100	132	25	22	180	420	102	125	11.4	13.5

Dimensions (mm) CLASS150

Dimensions (mm) PN16

Dimensions (mm) JIS 10K

Size	L	D	C	h	N	t	g	f	W (kg)	Size	L	D	C	h	N	t	g	f	W (kg)	Size	L	D	C	h	N	t	g	f	W (kg)
1/2"	108	89	60.5	16	4	11.5	35	1.6	1.73	1/2"	115	95	65	14	4	14	45	2	2.13	1/2"	110	95	70	15	4	12	52	1.0	1.92
3/4"	117	98	70	16	4	11.5	43	1.6	2.13	3/4"	120	105	75	14	4	16	58	2	2.85	3/4"	120	100	75	15	4	14	58	1.0	2.46
1"	127	108	79.5	16	4	11.5	51	1.6	2.92	1"	125	115	85	14	4	16	68	2	3.72	1"	130	125	90	19	4	14	70	1.0	3.88
1-1/4"	140	117	89	16	4	12.7	64	1.6	4.02	1-1/4"	130	140	100	18	4	16	78	2	5.32	1-1/4"	140	135	100	19	4	16	80	2.0	4.74
1-1/2"	165	127	98.5	16	4	14.3	73	1.6	5.90	1-1/2"	140	150	110	18	4	16	88	3	6.96	1-1/2"	165	140	105	19	4	16	85	2.0	6.30
2"	178	152	120.5	19	4	15.9	92	1.6	8.72	2"	150	165	125	18	4	18	102	3	9.68	2"	180	155	120	19	4	16	100	2.0	8.48
2-1/2"	190	178	139.5	19	4	17.8	105	1.6	13.33	2-1/2"	170	185	145	18	4	18	122	3	13.49	2-1/2"	190	175	140	19	4	18	120	2.0	14.33
3"	203	190	152.5	19	4	19.1	127	1.6	17.03	3"	180	200	160	18	8	20	138	3	17.53	3"	200	185	150	19	8	18	130	2.0	18.92
4"	229	229	190.5	19	8	24.0	157	1.6	28.98	4"	190	220	180	18	8	20	158	3	25.62	4"	230	210	175	19	8	18	155	2.0	34.21

*last updated 03/16