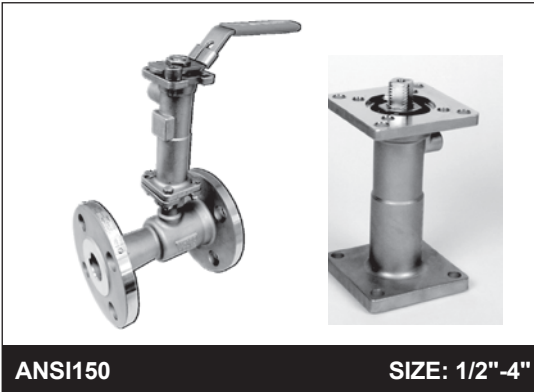


1-PIECE FLANGED BALL VALVE

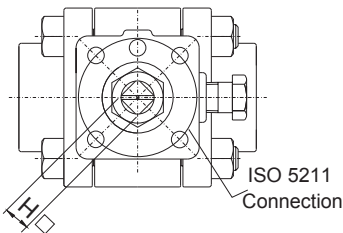
WITH FUGITIVE EMISSION BONNET

TYPE 107S-EB



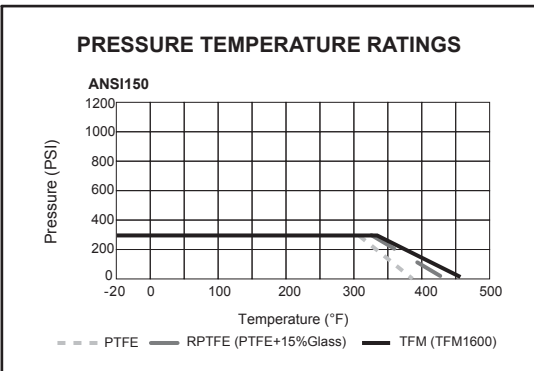
ANSI150

SIZE: 1/2"-4"



Break-Torque Valve for ANSI150(Nm/at 0 psi)							
Size	1/2"	3/4"	1"	1 1/2"	2"	3"	4"
GREASE	4.3	5.7	7.2	13	20	54	62
NON-GREASE	5.6	6.8	9.4	18.2	30	95	132

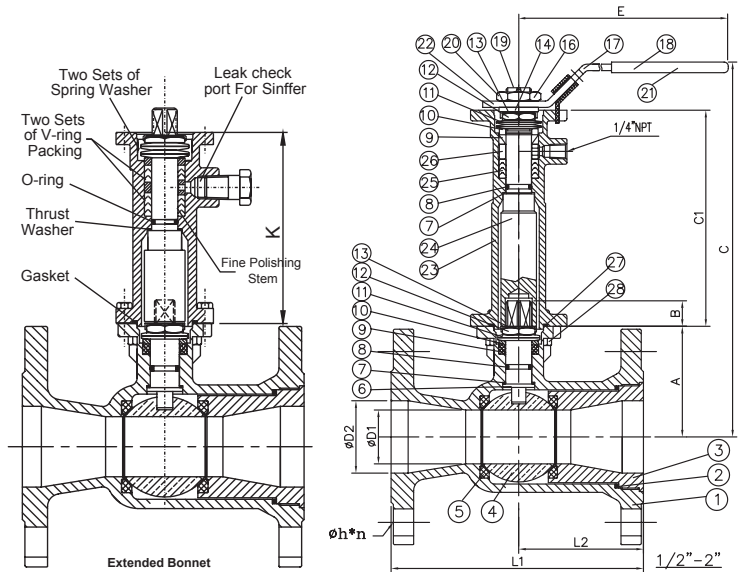
Fugitive Emission & Normal Extended Bonnet			
ITEM	ISO 5211	H	K
F34	F03/F04	9	4"(101.6)
F45	F04/F05	11	4"(101.6)
F57	F05/F07	14	6"(152.4)
F71	F07/F10	17	6"(152.4)
F101	F10/F12	22	6"(152.4)



Specification

- Face to Face: ANSI B16.10
- Flange connection: ANSI B16.5
- Working pressure: Class150
- Body & insert cap are investment cast
- 100% air tested under water at 80 PSI
- Temperature range : -29 to 450°F
- Available in Stainless Steel
- ISO 5211 direct mounting pad
- Self adjusting stem packing
- Blow-out proof stem design
- Pressure tested to API 598
- Option: ANTI-STATIC device

Completeness : Fugitive Emission Bonnet EB



Standard Material Specifications					
No.	Part Name	Materials	No.	Part Name	Materials
1	Body	CF8M	15	Position Screw	SS 304
2	Gasket	TFM1600	16	Handle Nut	SS 304
3	Insert cap	CF8M	17	Handle	SS 304
4	Ball	SS 316	18	Handle Cover	VINYL PLASTISOL
5	Ball Seats	TFM1600	19	Set Bolt	SS 304
6	Stem	SS 316	20	Lever Head	CF8
7	Thrust Washer	TFM1600	21	Lever	STEEL PIPE
8	O-Ring	VITON	22	Stopper	SS304
9	Stem Packing	TFM1600	23	Bracket	CF8
10	Gland Washer	SS 304	24	Lengthened Stem	SS304
11	Disk Washer	SS 301	25	Stem Packing	PTFE
12	Stem Nut	SS 304	26	Space Block	SS304
13	Nut Lock	SS 304	27	Bracket Gasket	PTFE
14	Gland Washer	SS 304			

Dimensions (mm)																					
Size	A	B	C	C1	D1	D2	E	F	G	d1	d2	H	L1	L2	Flange Dimensions (Class 150)						
															D	Bolt Hole			t	g	f
																c	h	n			
1/2"	47	11	178	101.6	12.5	15	130	-	42	-	6	9	108	48	89	60.5	16	4	11.5	35	1.6
3/4"	53	11	184	101.6	15	20	130	-	42	-	6	9	117	50	98	70	16	4	11.5	43	1.6
1"	58	11	189	101.6	20	25.4	130	-	42	-	6	9	127	50	108	79.5	16	4	11.5	51	1.6
1-1/2"	66	14	197	101.6	31.8	38.1	165	42	50	6	7.2	11	165	60	127	98.5	16	4	14.3	73	1.6
2"	77	18	262	152.4	38.1	50.8	205	50	70	6	7.2	14	178	75	152	120.5	19	4	15.9	92	1.6
3"	98	23	307	152.4	58	76.2	340	70	102	7.2	9.3	17	203	85	190	152.5	19	4	19.1	127	1.6
4"	118	23	327	152.4	76	101.6	340	70	102	7.2	9.3	17	229	95	229	190.5	19	8	24.0	157	1.6

*last updated 03/16