



PN16-40

### Design

- Shut of valve in casted and forged steel
- Straight patten with vertical stem and bolted bonnet
- Raised, turning stem
- Steam sealing in graphite
- Out blowing saft stem
- Back sealed stem
- Flanged or butt welded ends
- Welded seat
- Seat in Cr-steel or Stellite
- Self adjusted gland

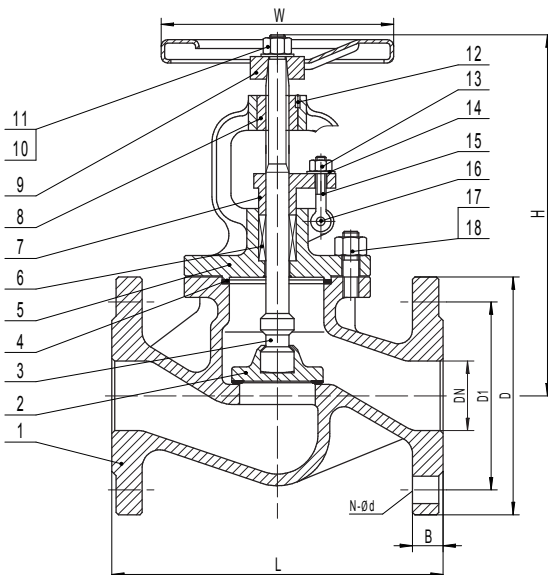
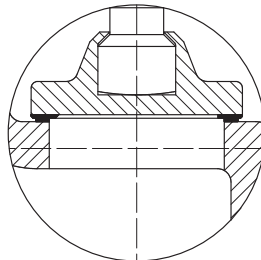
### Applications

- Water, steam, and other medium which not damage the internal components
- Uses within the all kind of industries
- Out blowing saft stem
- The valves are designed for shut of application or simple regulation

**Table 2. Pressure- temperature range for material in group 3EO, 5EO, 13EO and 14EO according to EN 1092-1**

Material body	PN	RT	100	150	200	250	300	350	400	450	500	520	530
Carbon steel 3EO, 1.0619/1.0460	16	16.0	14.9	13.9	12.4	11.4	10.3	9.6	9.2				
Carbon steel 3EO, 1.0619/1.0460	25/40	40.0	37.3	34.7	30.2	28.4	25.8	24.0	23.1				
Alloy Steel 5EO, 1.7357/1.7335		40.0	40.0	40.0	40.0	39.1	36.4	33.8	32.0	30.2	24.4	16.7	13.5
Stainless steel 13EO, 1.4404	16	13.5	11.7	10.7	9.7	9.0	8.5	8.0	7.7	7.4	7.1		
Stainless steel 14EO, 1.4408		14.6	12.4	11.2	10.3	9.6	9.0	8.5	8.2	8	7.8	7.7	7.5
Stainless steel 13EO, 1.4404	25/40	33.8	29.3	26.7	24.4	22.6	21.2	20.1	19.2	18.5	17.8		
Stainless steel 14EO, 1.4408		36.4	31.1	28.1	25.8	24.0	22.6	21.3	20.4	20.1	19.6	19.2	18.8

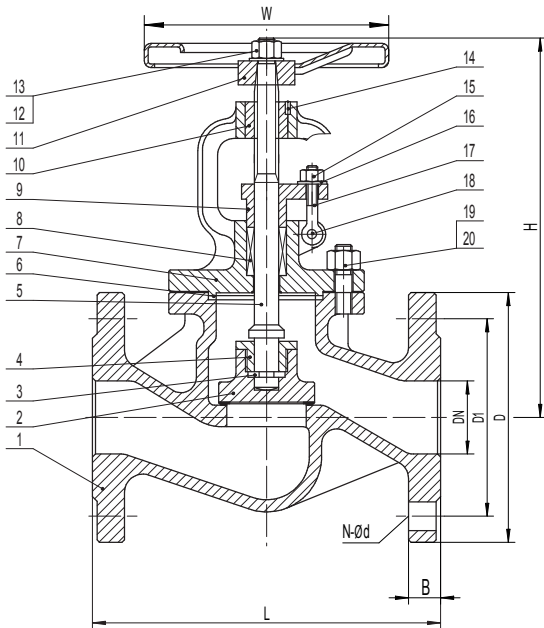
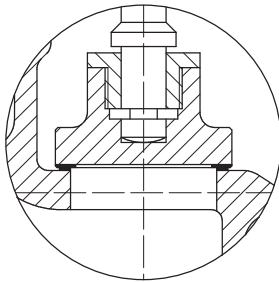
Casted valves  
DN15-DN50



**Table 3. Material specification-DN15-DN50**

POS	Detail	carbon steel 3EO -10°C till 400°C	Alloy steel 5EO -10°C till 530°C	stainless steel -20°C till 200°C	
1	Body	1.0619/1.0460(3EO)	1.7357(5EO)	CF8(2C1)	CF8M(2C2)
2	Disc	13Cr		F304	F316
	Seat	13Cr	Stellite	17Cr	Stellite
3	Stem	X20Cr13		F304	F316
4	Gasket	SS304+Graphite/PTFE	SS304+Graphite/PTFE	SS304+Graphite/PTFE	SS316+Graphite/PTFE
5	Nut	A194 2H	1.7709	A194 8	A194 8
6	Packing	Graphite/PTFE	Graphite/PTFE	Graphite/PTFE	Graphite/PTFE
7	Gland	1.0619	1.7357	CF8(2C1)	CF8M(2C2)
8	Stem nut	GGG50.3	GGG50.3	Cu alloy	Cu alloy
9	Wheel	C22.8	C22.8	C22.8	C22.8
10	Washer	C22.8	C22.8	C22.8	C22.8
11	Nut	A194 2H	1.7709	A194 8	A194 8
12	Lock pin	A193 B7	1.7709	A193 B8	A193 B8
13	Nut	A194 2H	1.7709	A194 8	A194 8
14	Washer	C22.8	C22.8	C22.8	C22.8
15	Eye blot	A193 B7	1.7709	A320 B8	A320 B8
16	Pin	CK25	CK25	SS304	SS304
17	Bolt	A193 B7	1.7709	A320 B8	A320 B8
18	Nut	A194 2H	1.7709	A194 8	A194 8

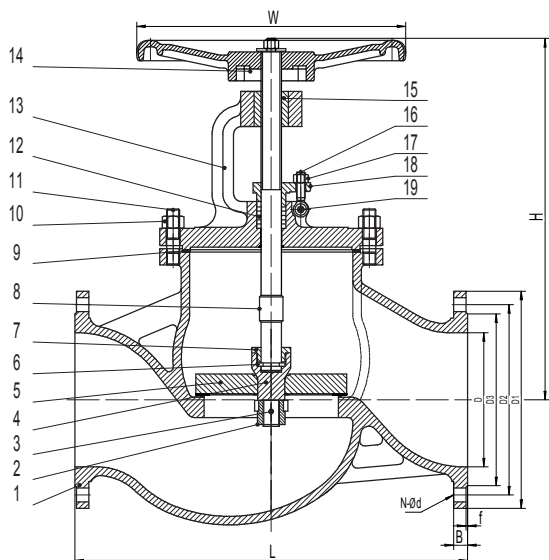
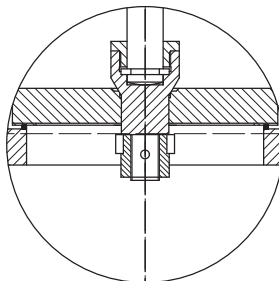
Casted valves  
DN65-DN150



**Table4. Material specification-DN65-DN150**

POS	Detail	Carbon steel 3EO -10°C till 400°C		Alloy steel 5EO -10°C till 530°C		Stainless steel -20°C till 200°C	
		1.0619/1.0460(3EO)		1.7357(5EO)		CF8(2C1)	CF8M(2C2)
1	Body	1.0619/1.0460(3EO)		1.7357(5EO)		CF8(2C1)	CF8M(2C2)
2	Disc	1.0460r		1.7375		F304	F316
		Seat	13Cr   Stelite	17Cr   Stelite	SS304   stelite	SS316   stelite	
3	Split ring	C22.8		F304		F304	F316
4	Disc screw	C22.8		F304		F304	F316
5	Stem	X20Cr13		X20Cr13		F304	F316
6	Gasket	SS304+Graphite		SS304+Graphite		SS304+Graphite	SS316+Graphite
7	Bonnet	1.0619		1.7357		CF8(2C1)	CF8M(2C2)
8	Packing	Graphite		Graphite		Graphite/PTFE	Graphite/PTFE
9	Gland	1.0619		1.7357		CF8(2C1)	CF8M(2C2)
10	Stem nut	GGG50.3		GGG50.3		Cu alloy	Cu alloy
11	Wheel	C22.8		C22.8		C22.8	C22.8
12	Shim	C22.8		C22.8		C22.8	C22.8
13	Nut	A194 2H		1.7709		A194 8	A194 8
14	Lock bolt	A193 B7		1.7709		A193 B8	A193 B8
15	Nut	A194 2H		1.7709		A194 8	A194 8
16	Shim	C22.8		C22.8		C22.8	C22.8
17	Eyeblot	A193 B7		1.7709		A193 B8	A193 B8
18	Pin	CK25		CK25		SS304	SS304
19	Blot	A193 B7		1.7709		A193 B8	A193 B8
20	Nut	A194 2H		1.7709		A194 8	A194 8

Casted valves  
DN200-DN400



**Table5. Material specification-DN200-DN400**

POS	Detail	carbon steel 3EO -10°C till 400°C		Alloy steel 5EO -10°C till 530°C		stainless steel -20°C till 200°C	
		1.0619		1.7357(5EO)		CF8(2C1)	CF8M(2C2)
1	Body	1.0619		1.7357(5EO)		CF8(2C1)	CF8M(2C2)
2	Screw	C22.8		C22.8		F304	F316
		Seat	13Cr   Stelite	17Cr   Stelite	SS304   stelite	SS316   stelite	
3	Pin	C22.8		1.7357		F304	F316
4	Balance Disc	1.0460		1.0460		F304	F316
5	Disc	1.0460		1.0460		F304	F316
6	Split ring	C22.8		C22.8		SS304	SS316
7	Disc screw	C22.8		C22.8		F304	F316
8	Stem	X20Cr13		X20Cr13		F304	F316
9	Gasket	SS304+Graphite		SS304+Graphite		SS304+Graphite/PTFE	SS316+Graphite/PTFE
10	Nut	A194 2H		1.7709		A194 8	A194 8
11	Bolt	A193 B7		1.7709		A193 B8	A193 B8
12	Packing	Graphite		Graphite		Graphite/PTFE	Graphite/PTFE
13	Bonnet	1.0619		1.7357		CF8(2C1)	CF8M(2C2)
14	Wheel	C22.8		C22.8		C22.8	C22.8
15	Stem Nut	GGG50.3		GGG50.3		Al-alloy	Al-alloy
16	Eyeblot	A193 B7		1.7709		A193 B8	A193 B8
17	Nut	A194 2H		1.7709		A194 8	A194 8
18	Gland	C22.8		C22.8		F304	F316
19	Pin	CK25		CK25		SS304	SS304

**Table 6. Dimension and weight. PN16-PN25/40**

Face to face:flanged acc.to EN 558-1 serie 1. Flange acc.to EN1092-1, type B1,

Face to face:butt welded acc.to EN12982, serie 1; butt weld ends acc.to EN12627

DN	PN	L	D	b	D1	N-Ød	Weight flanged	LS	Weight BW-end	ØW	Hmax	Kv Z=4,4
mm		mm	mm	mm	mm	antxmm	Kg	mm	Kg	mm	Mm	m <sup>3</sup> /h
15	<b>16-25/40</b>	130	95	16	65	4x14	3,6	130	2,1	120	180	4,5
20		150	105	18	75	4x14	5,2	150	3,8	140	190	8
25		160	115	18	85	4x14	6,8	160	5,1	160	220	13
32		180	140	18	100	4x18	8,5	180	5,7	180	220	20
40		200	150	18	110	4x18	11,7	200	8,4	200	255	33
50		230	165	18	125	4x18	16,0	230	11,7	200	260	50
<hr/>												
65	<b>16</b>	290	185	18	145	4x18	21,8	290	17,7	250	265	82
80		310	200	20	160	8x18	29,1	310	25,3	280	300	133
100		350	220	20	180	8x18	38,5	350	30,9	300	310	205
125		400	250	22	210	8x18	58,0	400	49,2	360	390	315
150		480	285	22	240	8x22	78,0	480	69,5	400	410	454
200		600	340	24	295	12x22	167,0	600	153,0	400	495	780
250		730	405	26	355	12x26	245,0	730	222,0	500	660	1285
300		850	460	28	410	12x26	350,0	850	315,0	500	705	1805
350		980	520	30	470	16x26	595,0	980	550,0	600	850	2225
400		1100	580	32	525	16x30	954,0	1100	905,0	600	950	2906
<hr/>												
65	<b>25/40</b>	290	185	22	145	8x18	22,6	290	18,5	250	265	82
80		310	200	24	160	8x18	31,0	310	27,0	280	300	133
100		350	235	26	190	8x22	41,0	350	35,9	300	310	205
125		400	270	26	220	8x26	60,0	400	53,6	360	390	315
150		480	300	28	250	8x26	82,0	480	72,0	400	410	454
<hr/>												
200	<b>25</b>	600	360	30	278	12x26	175,0	600	160,0	400	495	780
250		730	425	32	335	12x30	260,0	730	236,6	500	660	1285
300		850	485	34	395	16x30	370,0	850	336,7	500	705	1805
350		980	555	38	450	16x33	645,0	980	587,0	600	850	2225
400		1100	620	40	505	16x36	995,0	1100	910,0	600	950	2906
<hr/>												
200	<b>40</b>	600	375	34	285	12x30	184,0	600	167,0	400	495	780
250		730	450	38	345	12x33	285,0	730	260,0	500	660	1285
300		850	515	42	410	16x33	390,0	850	355,0	500	705	1805
350		980	580	46	465	16x36	700,0	980	637,0	600	850	2225
400		1100	660	50	535	16x39	1125,0	1100	1023,0	600	950	2906